



AMP Health Overview

Institutionalizing Community Health Conference
March 28, 2017

Community health workers play a key role in advancing health and broader development goals...

Community health workers (CHW) are laypeople trained to deliver basic services



- Trusted members of the community they serve
- Example services include administering vaccines and distributing bed nets
- Serve as point of access to health system for rural areas

CHWs play a key role in health systems in developing countries

- **Health worker shortage**
Sub-Saharan Africa (SSA) has 25% global disease burden, 3% of health workers
- **Burden of chronic diseases**
90% of premature deaths from non-communicable disease (NCD) are in low-middle income countries
- **Need for preparedness**
CHWs can perform outbreak surveillance, reporting, control and management (e.g., Ebola epidemic)

CHWs generate proven health, economic and social benefits

33%

Less deaths among children < 5

10:1

Return on financial investment

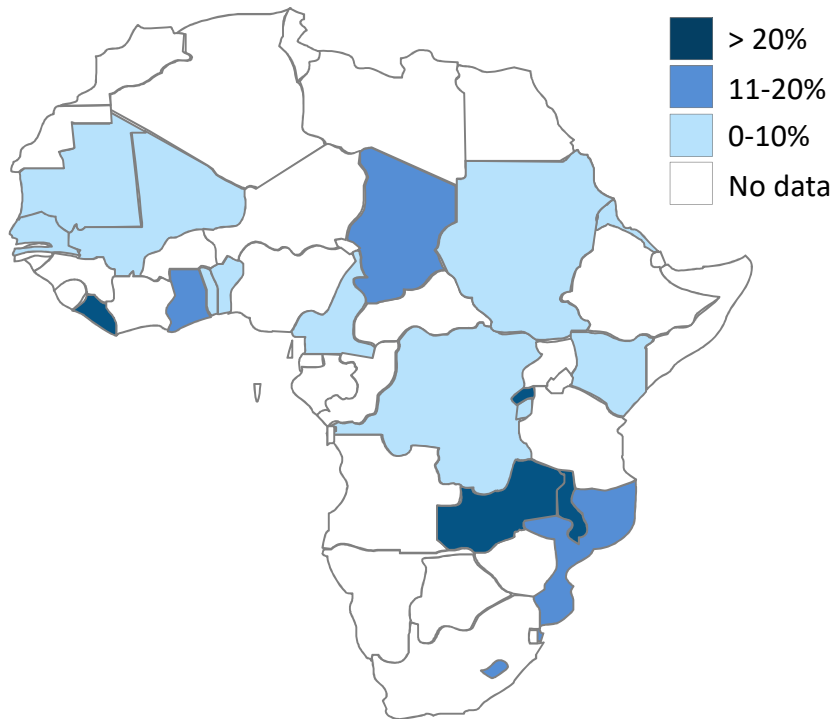
70%

CHWs are women

...but CHW systems are still limited in scope & effectiveness in many countries

CHW coverage is limited in scope & effectiveness

% of country population covered by CHW



~1 billion people lack access to basic health services that CHWs can deliver

Leadership and management matters

>2x

Multiple measures of performance of higher functioning organizations vs lower functioning

67%

% increase in coverage of key interventions after management capacity building in Kenya

Lack of management skill appears to be the single most important barrier to improving health throughout the world

William Foege
Former Director, US CDC

Stronger leadership & management were key enablers of CHW success in Rwanda & Ethiopia

AMP Health is an innovative cross-sector approach to supporting ministries of health in strengthening community health systems



Program elements

1. Placement of mid-career professionals (Management Partners) into ministries of health for 2 years
2. Targeted leadership & management development program
3. Platform for cross-country sharing of best practices



AMP Health partners	

We began with testing our model in countries at various points in the development of community health worker systems



Stage			
Country	<i>Malawi</i>	<i>Sierra Leone</i>	<i>Kenya</i>
Partnership established	July 2016	October 2016	February 2016
Current focus of work	Support development of first-ever community health strategy for 9000+ HSAs and their supervisors	Support the training of 15,000 CHWs in two phases by Aug 2017; Supporting efforts towards sustainable funding	Support training of 1000 CHWs in counties; Increase new funding for community health by between \$4m-\$8m in 2017

We are actively seeking countries across Africa to partner with to grow our network of problem-solvers and leaders



AMP Health looks for evidence of the following in determining countries best suited for partnership:



Key inflection point in community health system that could benefit from more effective leadership & management and/or have an ambitious plan for scaling up the community health system



Strong political commitment to community health



Engaged network of donor and implementing partners interested in supporting the development of community health systems

To apply, an Expression of Interest must be submitted by April 30, 2017

More information and instructions on how to submit an Expression of Interest can be found [here](#).

Meet some of the AMP Health team at ICHC



Kenya



Dr Salim Hussein
Head, Community Health and Development Unit, MOH



Mr Thomas Kisimbi
Management Partner

Malawi



Ms Doreen Ali
Deputy Director, Preventive Health Services, Community Health Program, MOH



Mr Precious Phiri
National Primary Healthcare Coordinator, MOH



Mr Matthew Ramirez
Management Partner

Sierra Leone



Ms Elizabeth Musa
Team Lead, CHW Hub, MOHS



Mr Kiribakka Tendo
Management Partner

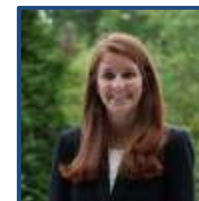
AMP Health Global



Mr David Milestone
USAID
Co-chair, AMP Health Advisory Board

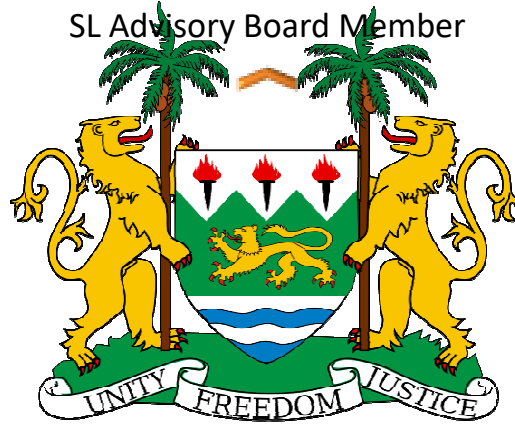


Ms Phyllis Heydt
UN Special Envoy for Health
Co-chair, AMP Health Advisory Board



Ms. Kiersten Abate
AMP Health

SL Advisory Board Member



Ministry of Health & Sanitation



CHW Training

- Personal financial management
- Saving

Ecobank
The Pan African Bank

CHW Hub Mentoring

- 1 week shadowing
- Coaching

Kenya's Public-Private Partnership Engagement



The Community Health and Development Unit and AMP Health partner with Norvatis to launch the pilot program for Community Health Extension Workers (CHEWs)

1

PPP Context

- Kenya has an existing PPP policy; a strategy and implementation plan still needs to be developed
- Managers at MoH and in the private sector indicate that engagement with the Private Sector is fraught with concerns around understanding what they want and a trust asymmetry

2

Opportunity

- The MoH was looking to launch a new training curriculum for Community Health Extension Workers (CHEWs); funding constraints
- Norvatis, implementing its program, *Familia Nawiri* (Health Families) needs to meet the training standards set by MoH for its workforce, and has the funding to train its workers

3

AMP Health/CHDU Intervention

- AMP Health brought Norvatis, UNICEF and CHDU to the table to finalize a plan where CHEWs from *Familia Nawiri* Community Health Units would pilot the new curriculum; and the MoH would have an opportunity to pre-test it at KMTC
- This was a partnership where both the MoH/CHDU and the private sector player, Norvatis, have a mutually beneficial partnership
- Training for an initial 70 CHEWs, with scale planned for 1,000 CHEWs in Year 1 leveraging funding from Norvatis and UNICEF to trigger other funding sources