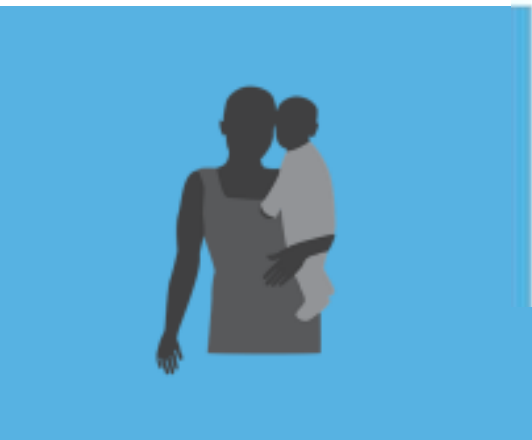




Institutionalizing Community Health Conference



27-30 March 2017 | Johannesburg, South Africa



#HealthForAll
ichc2017.org



USAID
FROM THE AMERICAN PEOPLE

USAID
ASSIST PROJECT
*Applying Science to Strengthen
and Improve Systems*

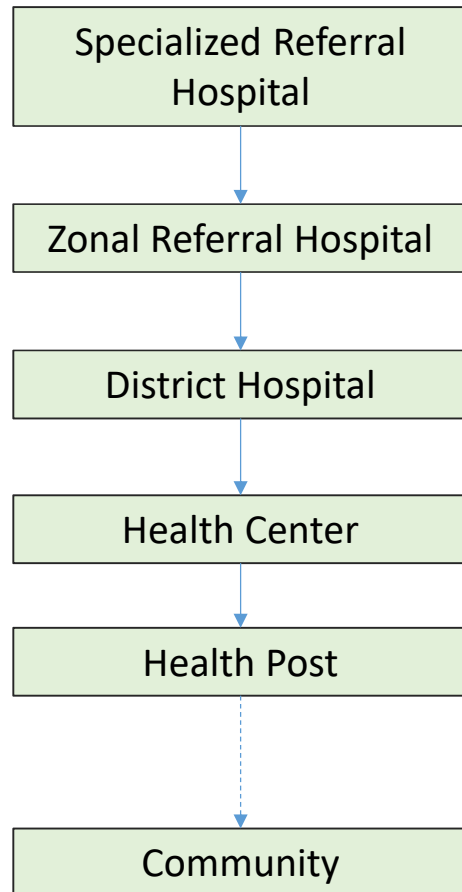
Improve performance of CHWs/CHVs by strengthening the community system



Ram Kumar Shrestha

Senior Improvement Advisor, Community Health and Nutrition
USAID Applying Science to Strengthen Improvement System
(ASSIST) Project, University Research Co, LLC

Health Facility Structures



Challenges :

1. Low coverage
2. Low retention
3. Lack of follow-up
4. Low referral

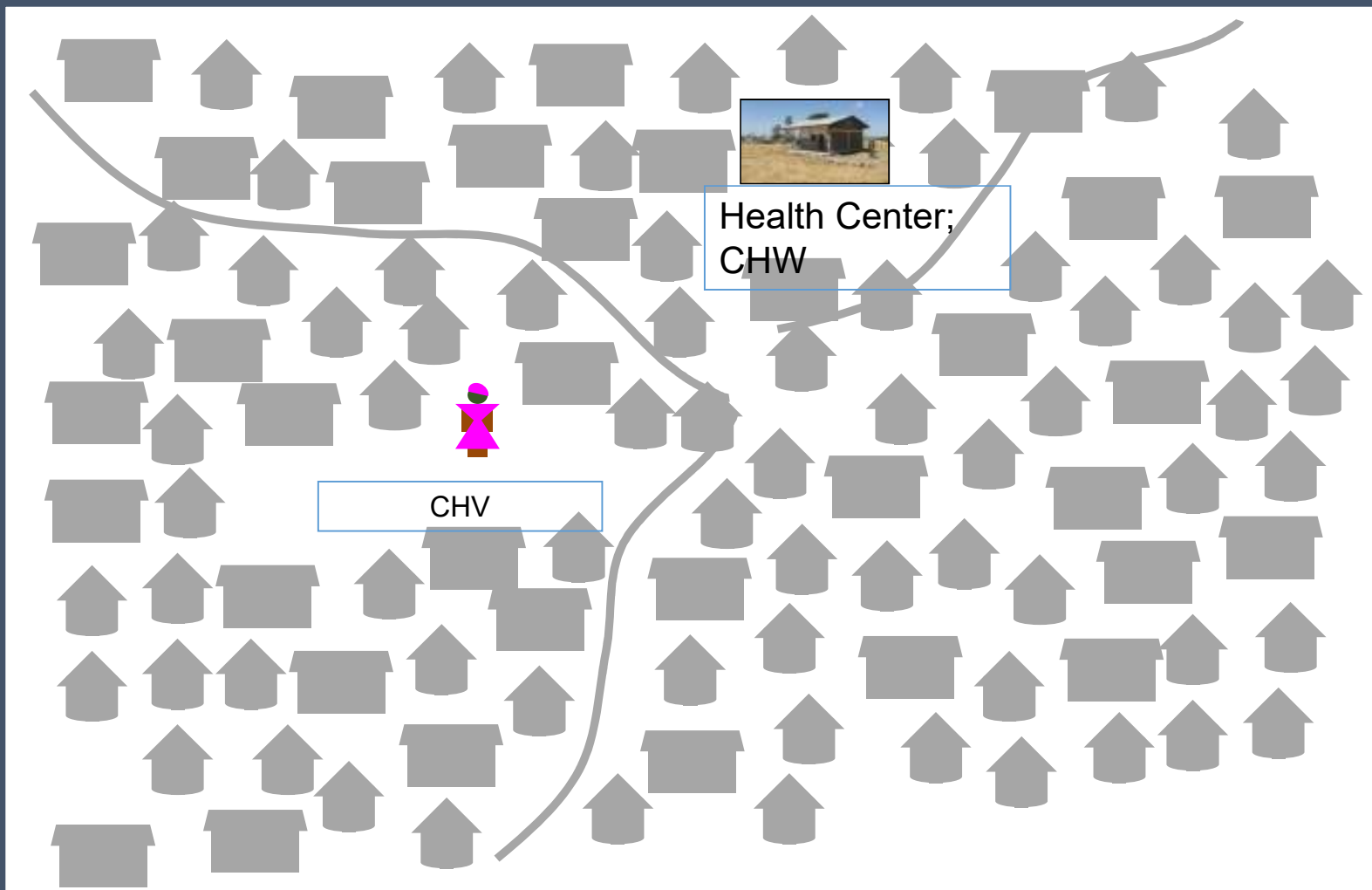
Because:

1. Large coverage area
2. No transportation
3. No support

Therefore:

1. Not able to reach all households
2. Miss hard-to-reach households
3. Not able to reach underserved households
4. Low motivation

Health care structure in the community



Challenges :

1. Low coverage
2. Low retention
3. Lack of follow-up
4. Low referral

Because:

1. Large coverage area
2. No transportation
3. No support

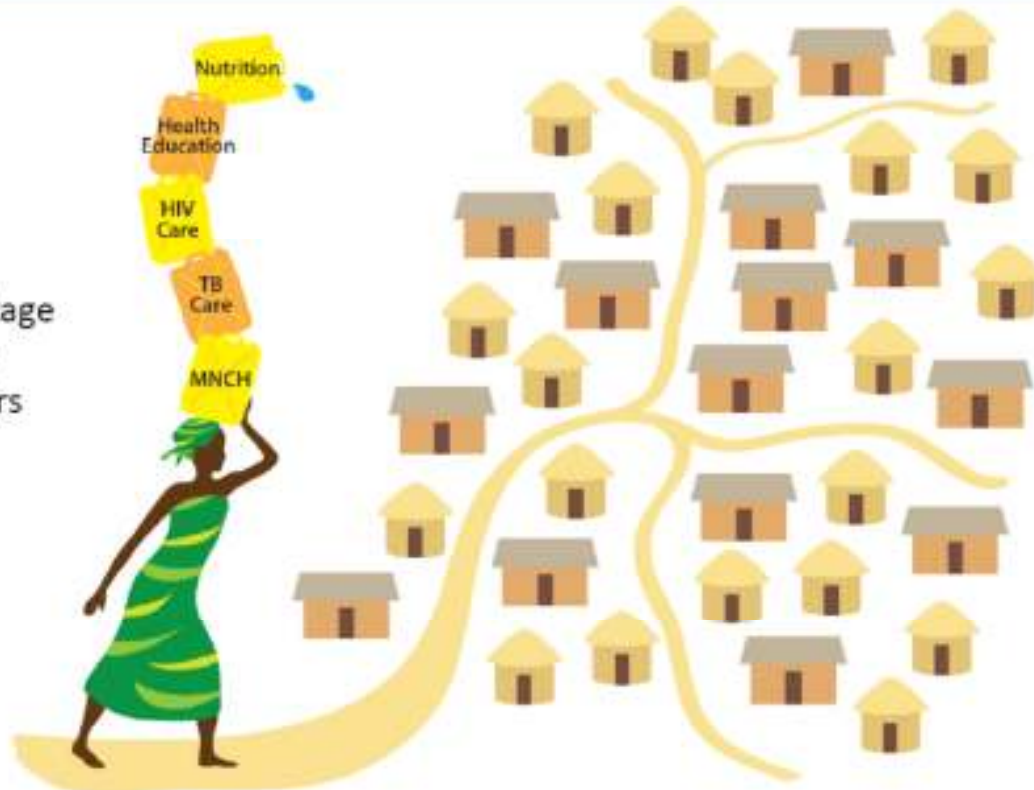
Therefore,

1. Not able to reach all households
2. Miss hard-to-reach households
3. Not able to reach underserved households
4. Low motivation

Ram Shrestha

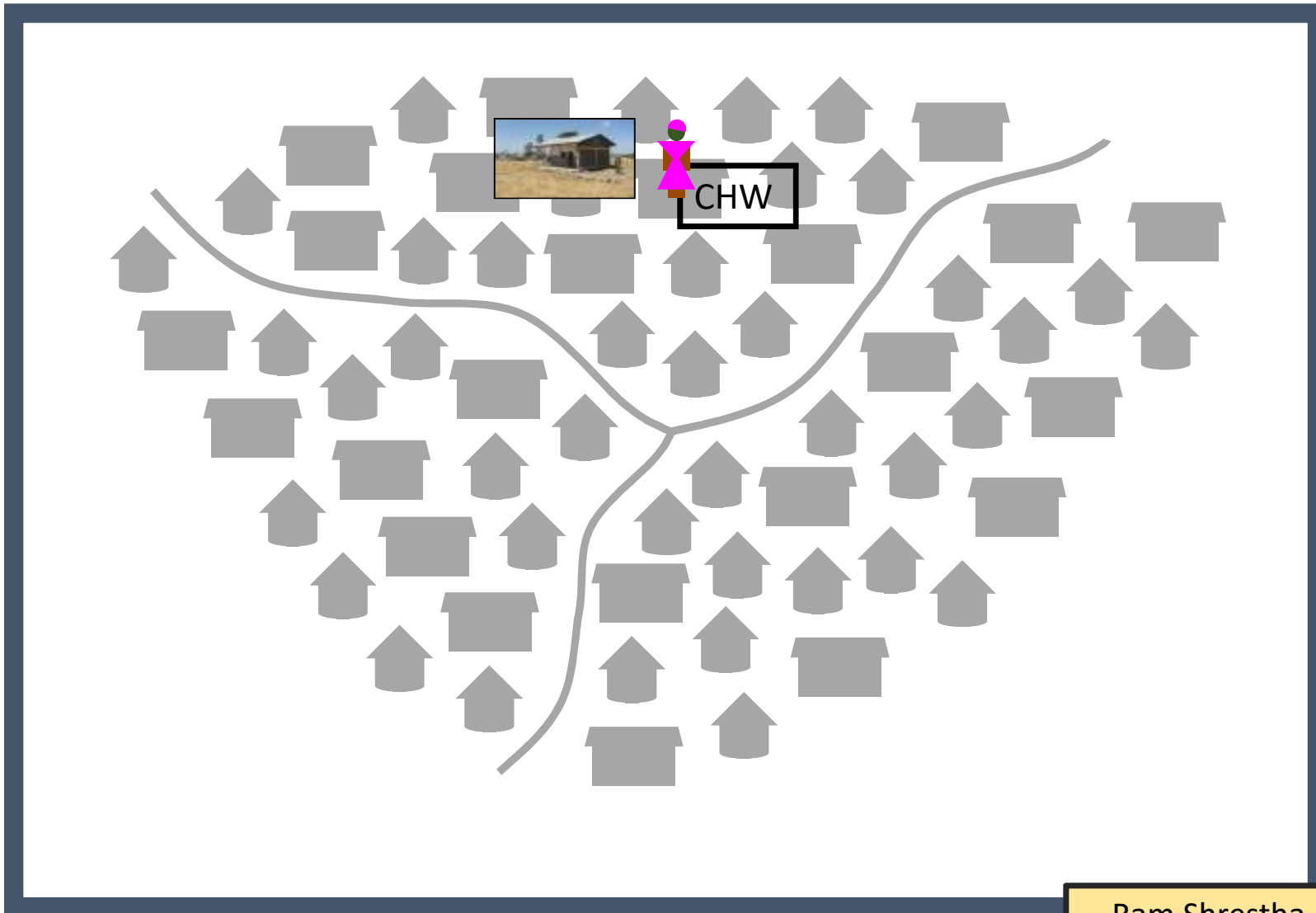
Community health workers play an important role – but are they set up to succeed?

Context:
Current shortage
of 7.2 million
health workers



Ram Shrestha

Problem: No formal structure from health facility to household



Possible solutions:

1. More CHWs
OR

1. More CHVs
Both of them require additional funds

OR

1. Strong community support

Moderate cost

Ram Shrestha

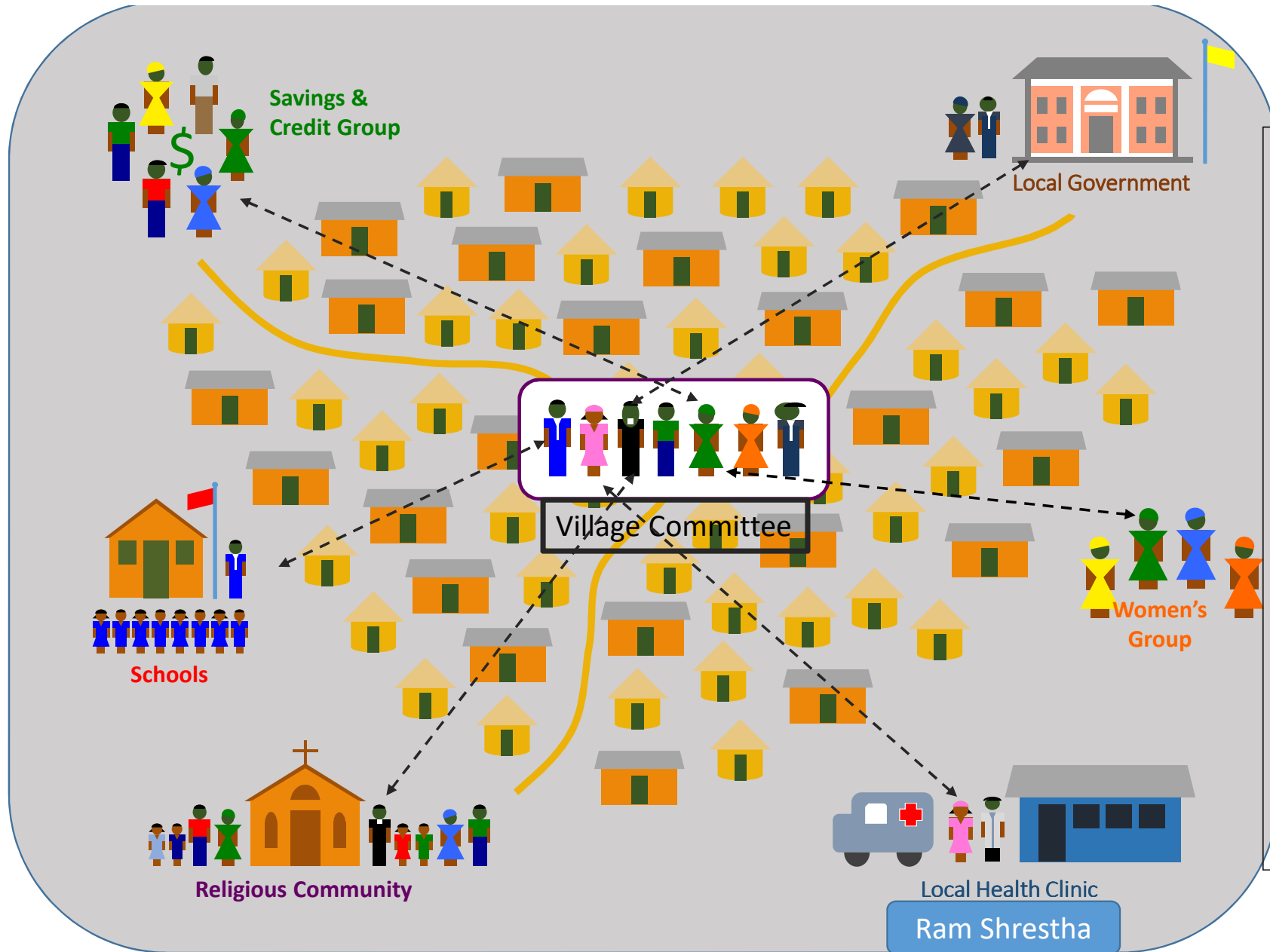
Interventions tested to motivate CHWs/CHVs

- Recognition
- Respect
- Status
- Incentives
- Trust (Relationship)

**Good motivation
and good program
results - in the
short term**

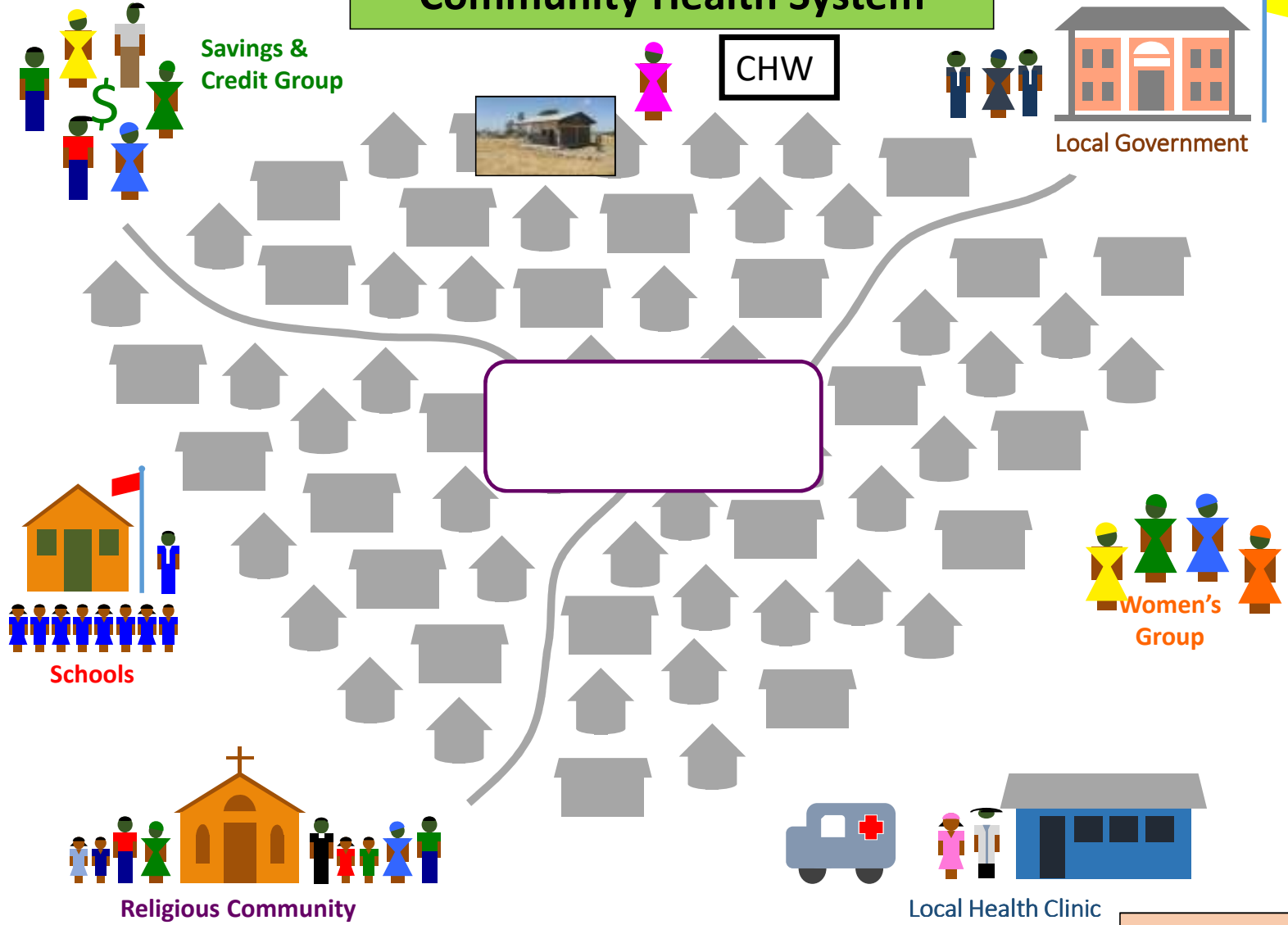
Why ?

**Lack of continued
support**



- CHW/CHVs**
1. Reach HHs through community groups unless HH needs special health service from CHW
 2. Each CG member responsible for his /her family member's health issues

Community Health System

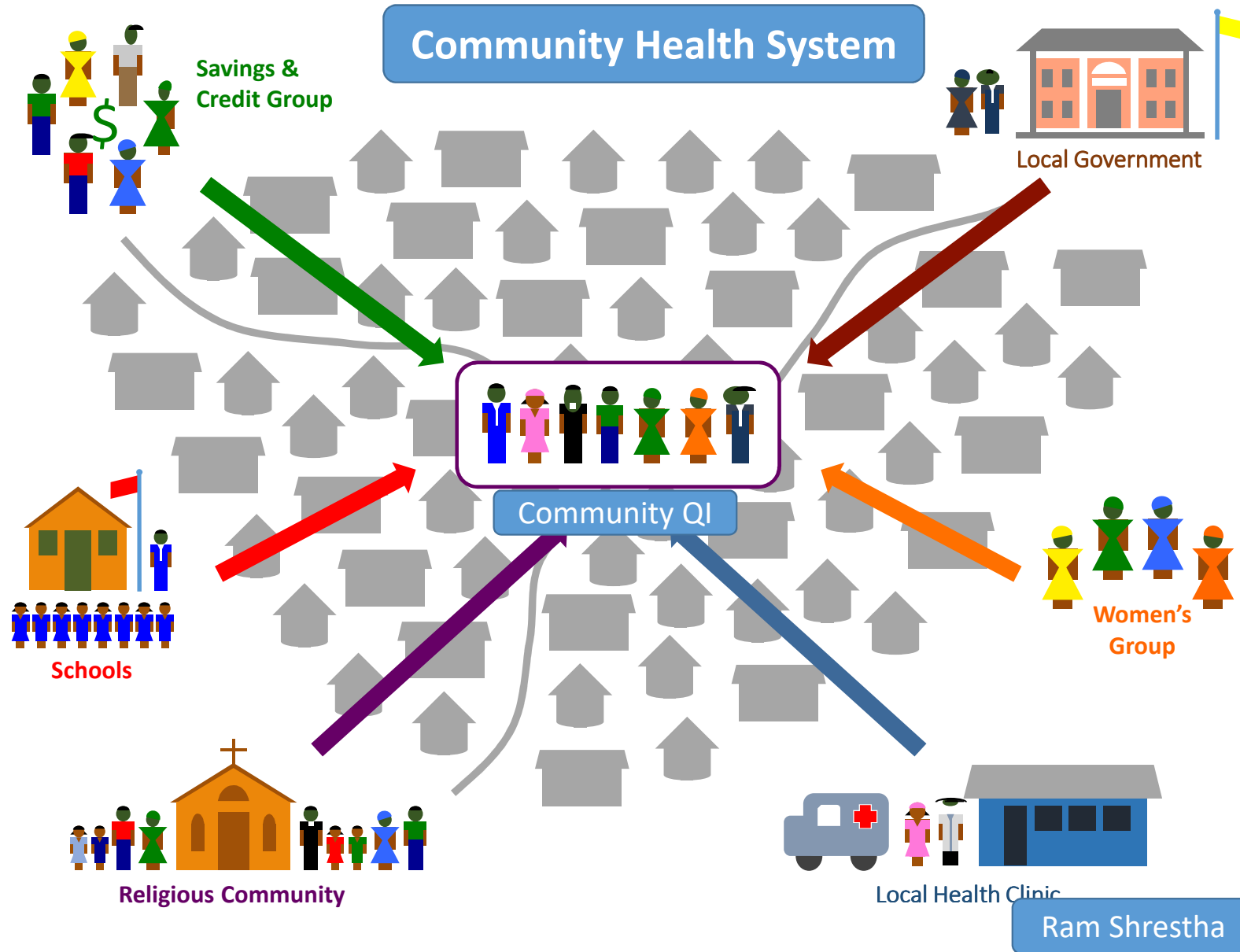


Community System processes:

Flow of Information

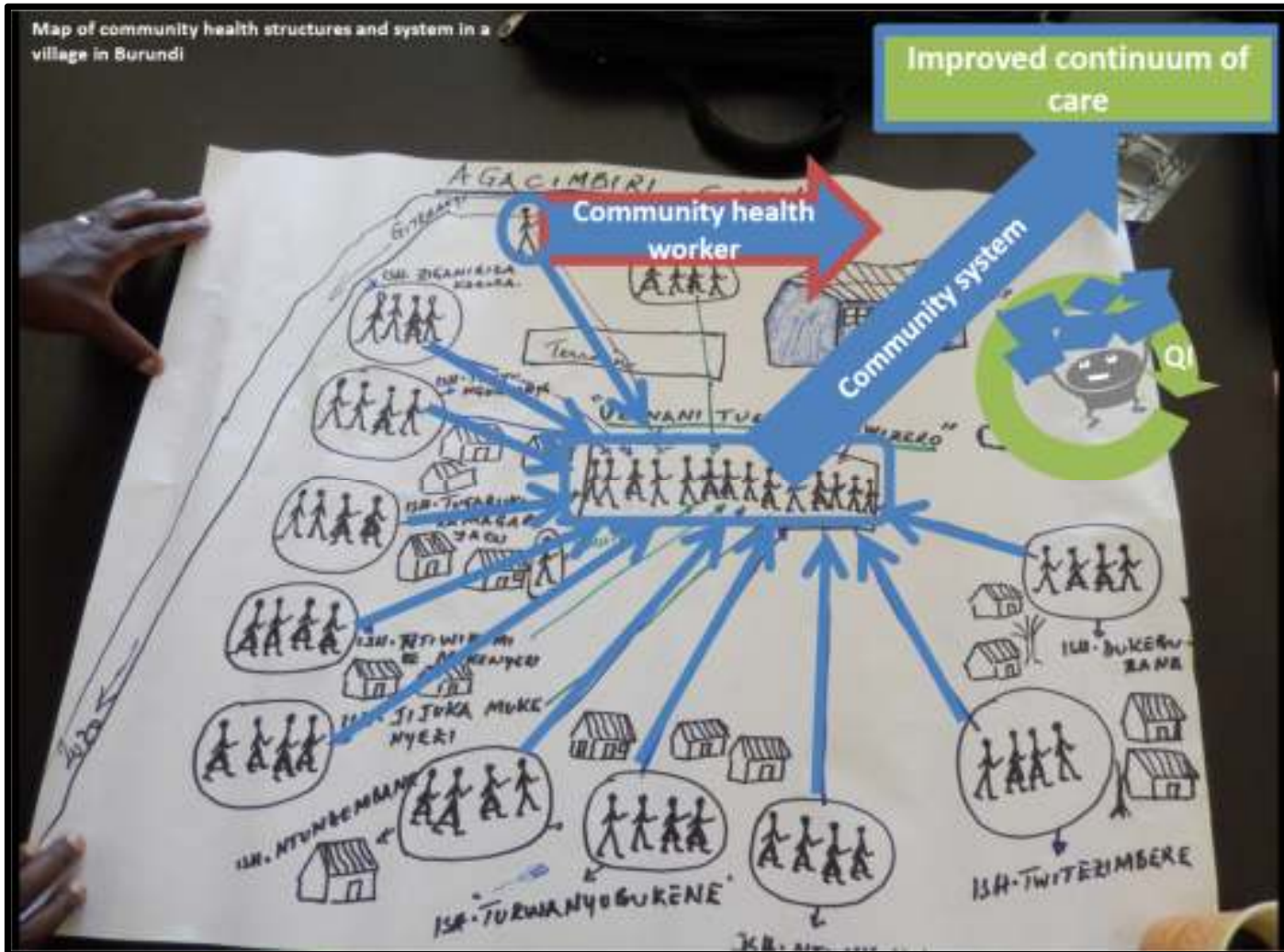
1. HF to VC to CG to HH
2. HH to CG to VC to CHW/CHV to HF to DHMT

Ram Shrestha



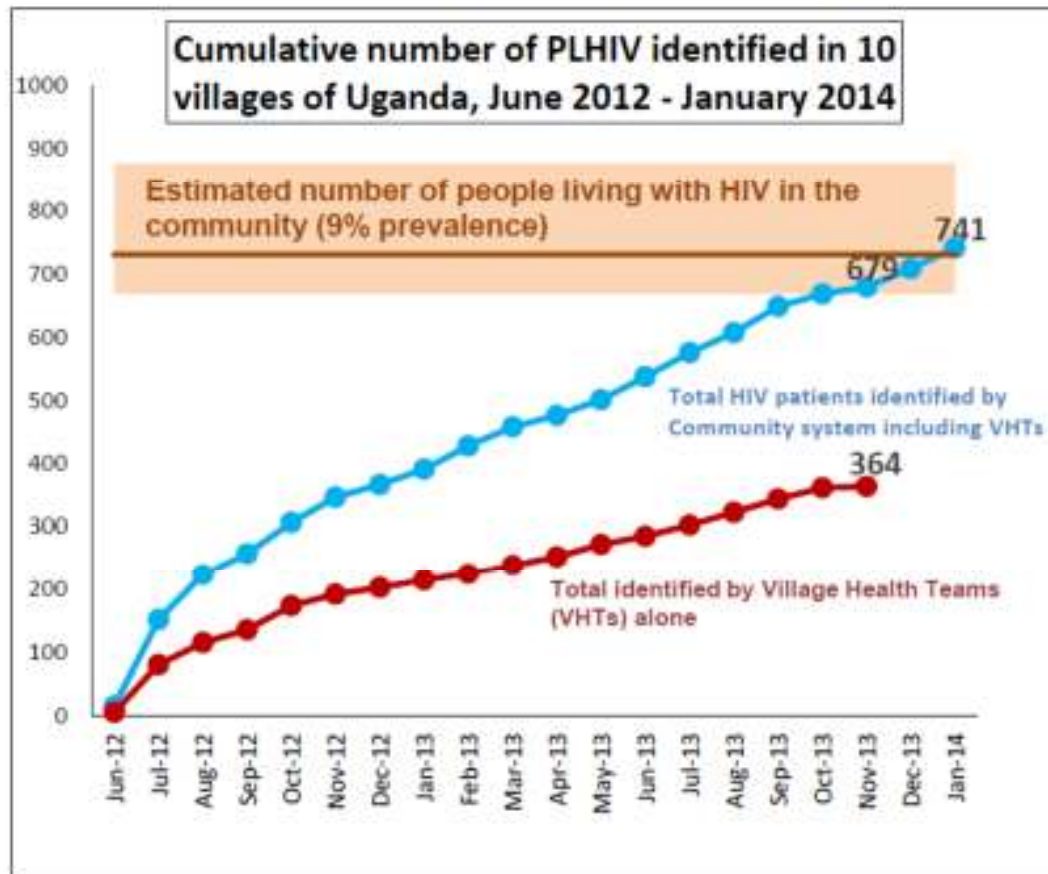
Application of QI approach to improve quality of services at the community level
(strengthen the linkages between community and health facility)

Map of community health structures and system in a village in Burundi



HF coach interact with community people to establish a map of community health structure

PLHIV identification with engaged community health system, Buikwe District, Uganda

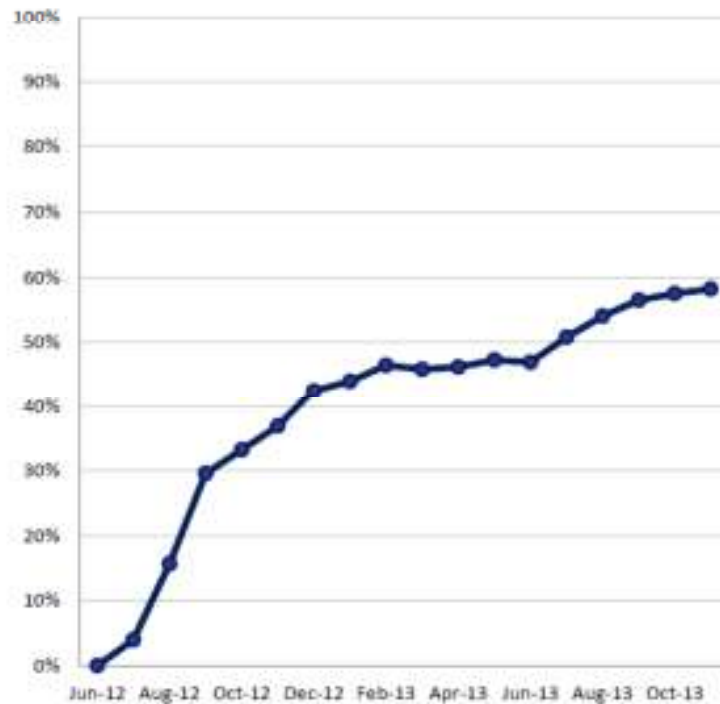


Change ideas:

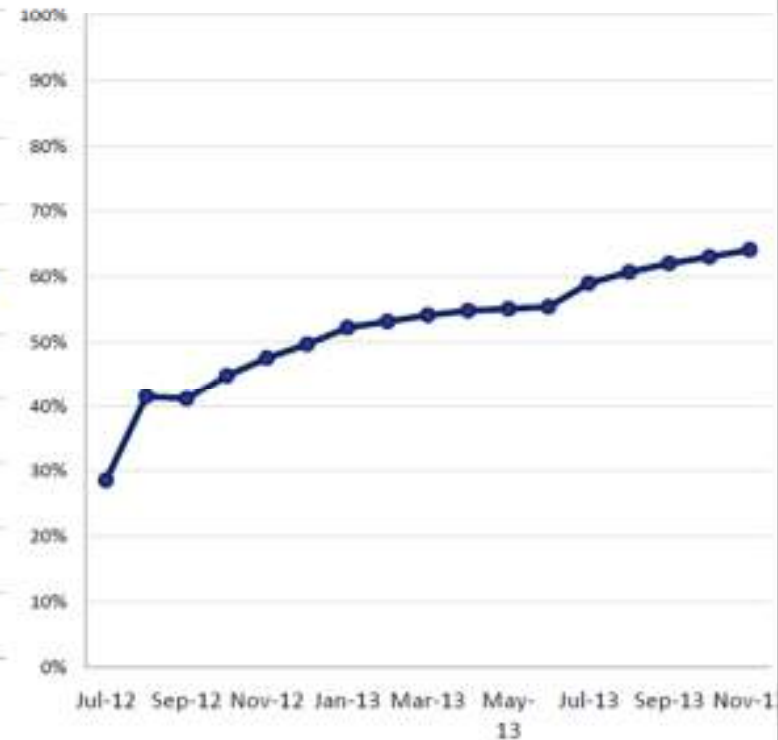
- Linking with existing HIV service organizations for HIV testing outreach in the community
- QI teams raise HIV/AIDS awareness in places of worship
- QI team conduct awareness activities during mass activities (e.g. hygiene and immunization days)
- QI team members conduct HIV awareness to their families
- Disseminate HIV messages to men at work (e.g., during brick laying)

Developing **self-management plans** among identified PLHIV + improved clinical status, Buikwe District, Uganda

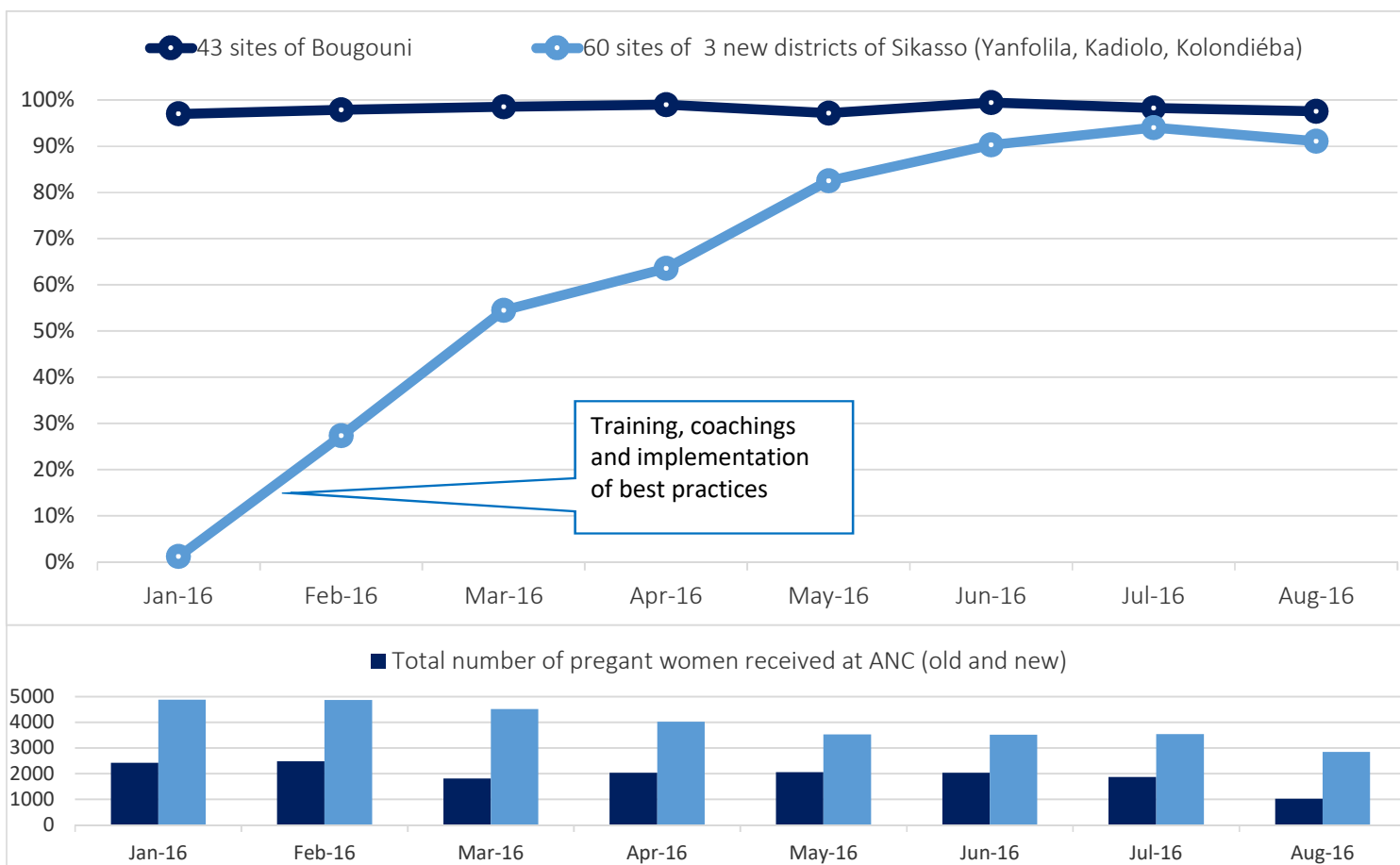
% People living with HIV with Self Management Plans, June 2012 – November 2013



% People living with HIV with improved clinical status, July 2012 – November 2013

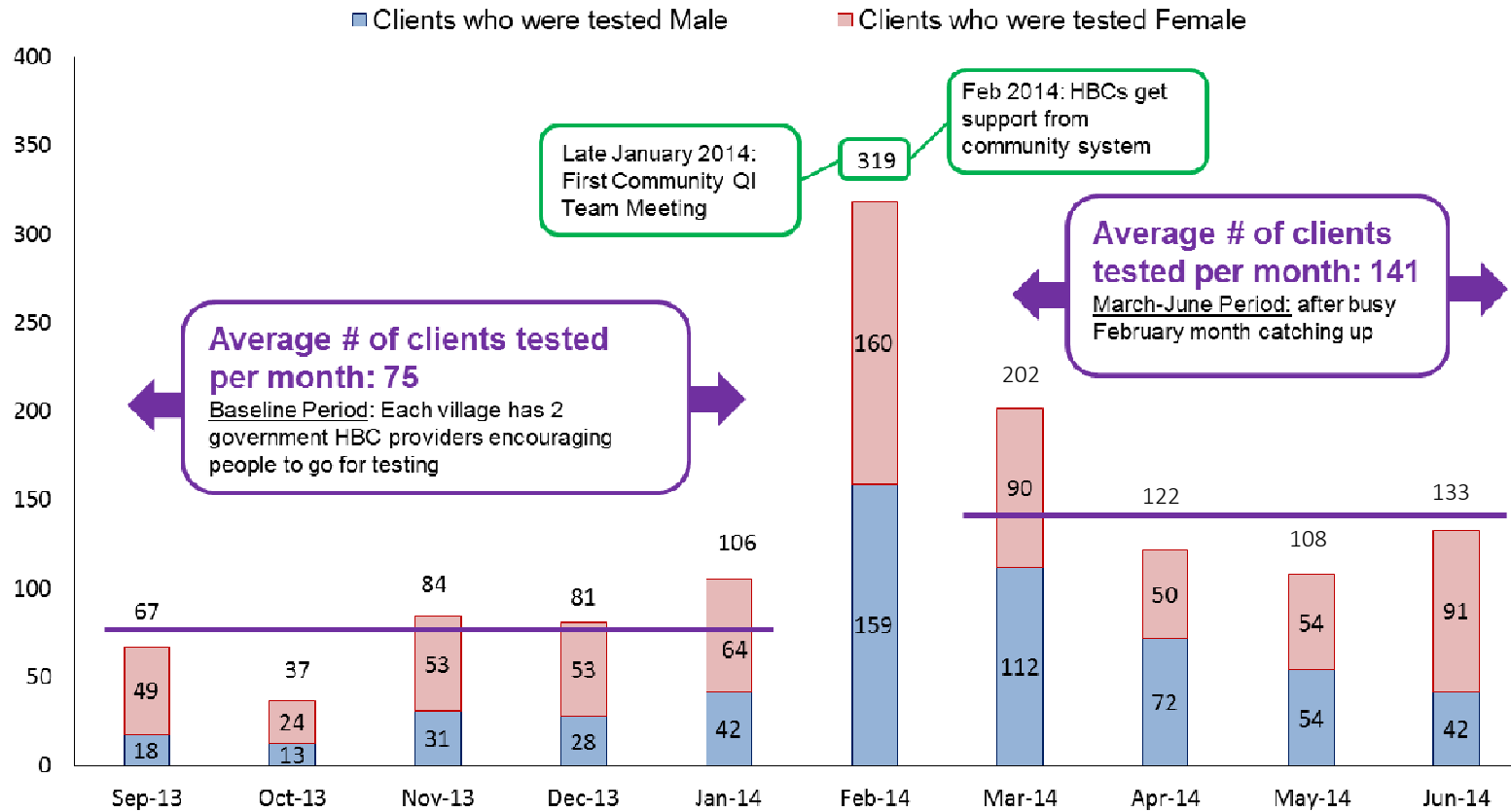


Results: % of pregnant women screened for anemia during ANC visits, 103 sites, Sikasso Region, Mali, Jan–Aug 2016

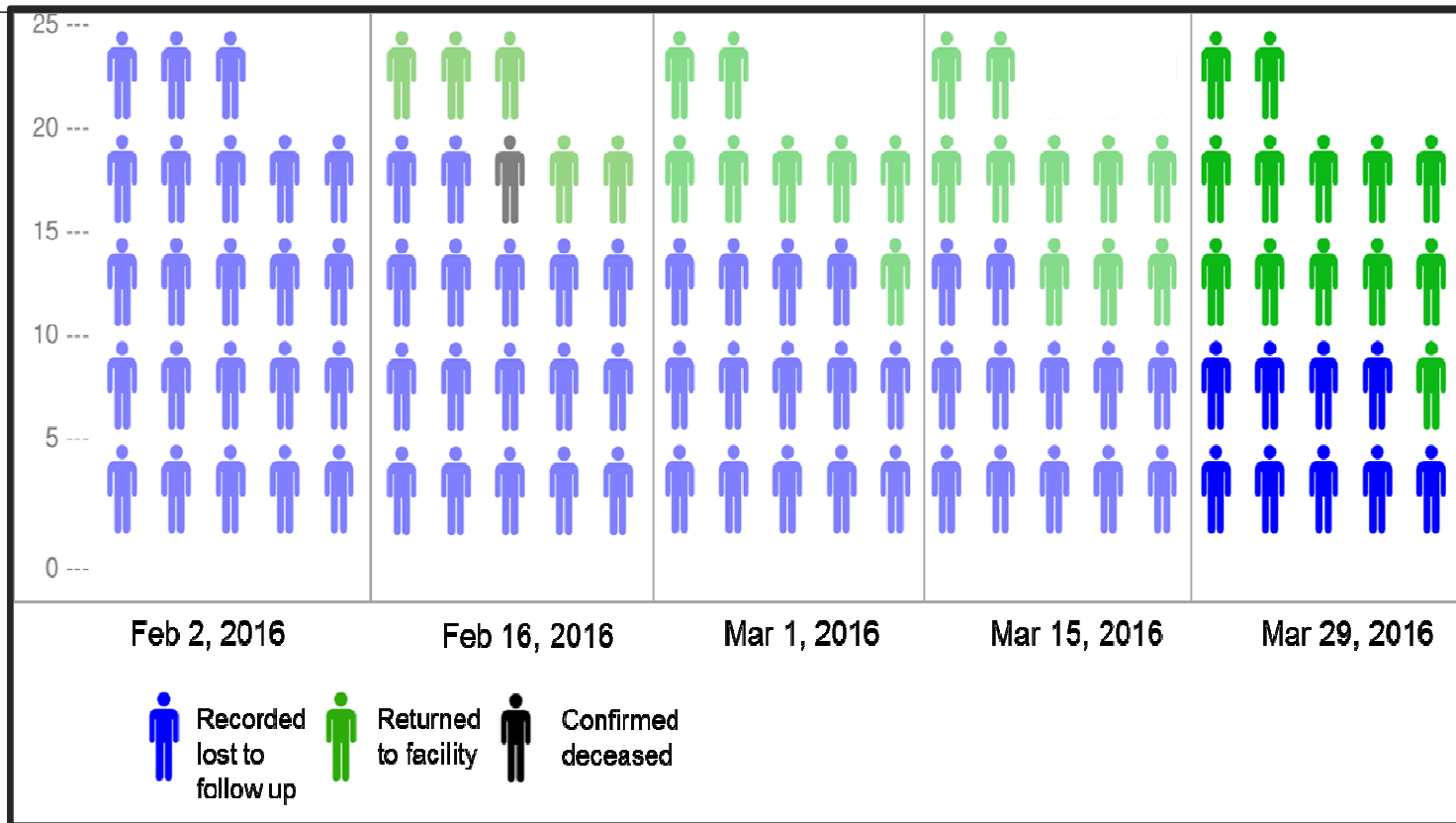


Results: Increase in HIV testing, Muheza District, Tanzania

Number of Clients Tested for HIV from Mkuzi and Kilulu Communities in Tanzania, September 2013 - June 2014



Reduction of LTFU patients at Palla Road, Botswana, February 2, 2016 – March 29, 2016



SUMMARY

- Use government health structure
- ASSIST plays the role of facilitator; characteristics of the approach:
 - Use **existing networks** to expand reach of CHW
 - Develop **communication channels** from HH up to facility.
 - down comes *health messaging*, up goes *case information*
 - Create **data system** for data collection at community to be compared with facility data to understand performance of area that community can influence
 - Institute **a system** for regular **review** of performance data to determine what needs improvement
 - Promote **locally developed solutions** that can be immediately **tested** in a short time to determine effectiveness using the performance data-
 - **QI approach** which is different than other projects which do long term planning and data review infrequently or not at all



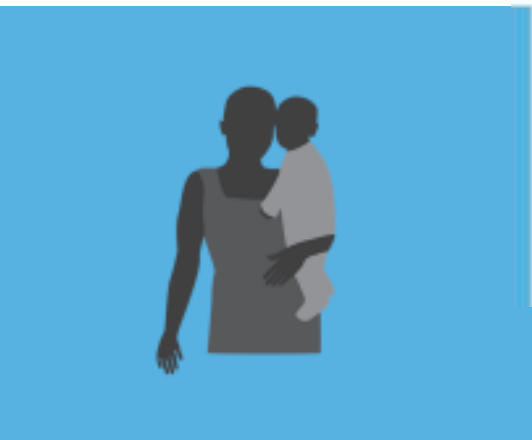
Thank You



Institutionalizing Community Health Conference



27-30 March 2017 | Johannesburg, South Africa



#HealthForAll
ichc2017.org